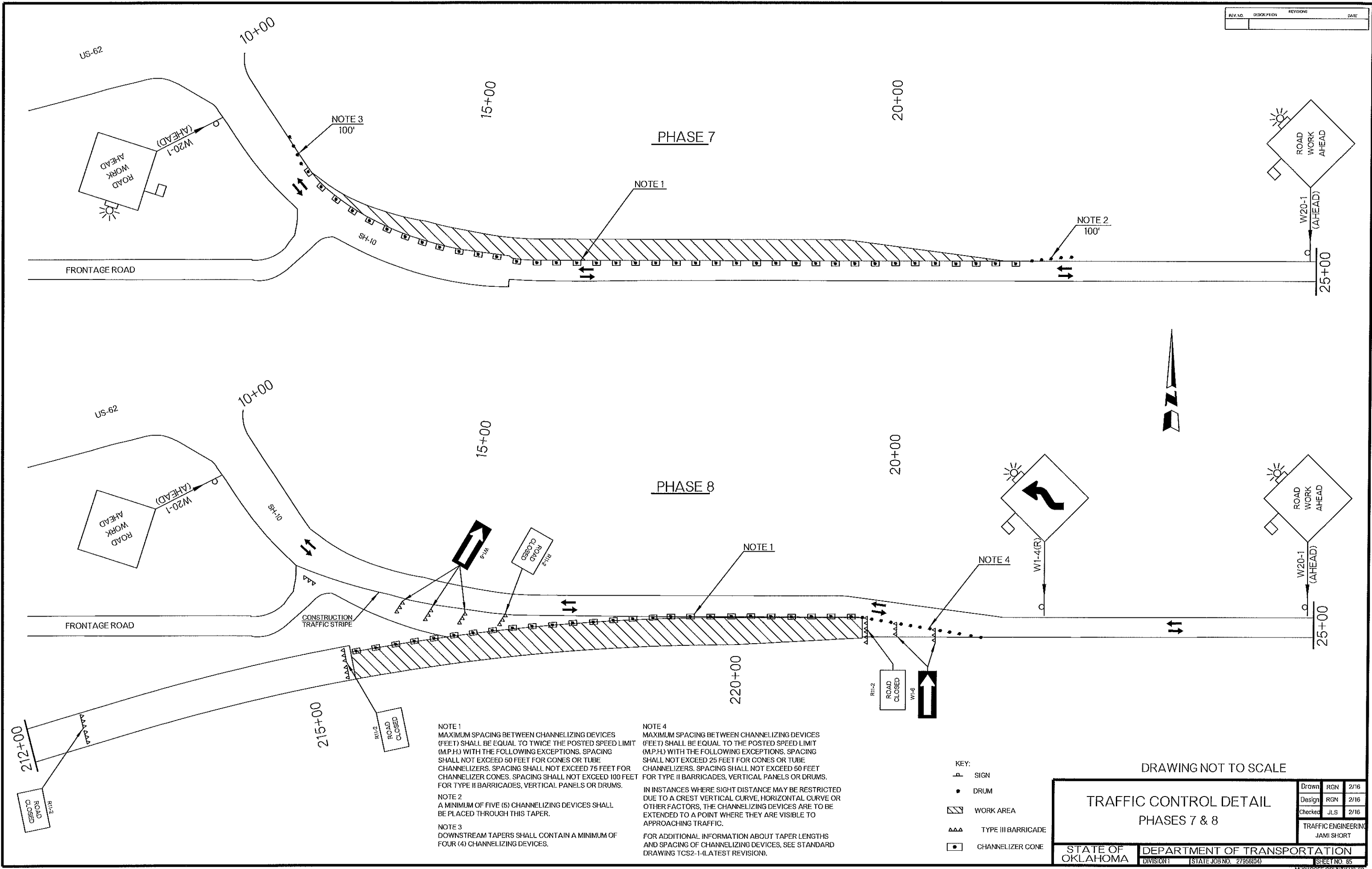


REV. NO.	DESCRIPTION	REVISION	DATE



**NOTE 1**  
 MAXIMUM SPACING BETWEEN CHANNELIZING DEVICES (FEET) SHALL BE EQUAL TO TWICE THE POSTED SPEED LIMIT (M.P.H.) WITH THE FOLLOWING EXCEPTIONS. SPACING SHALL NOT EXCEED 50 FEET FOR CONES OR TUBE CHANNELIZERS. SPACING SHALL NOT EXCEED 75 FEET FOR CHANNELIZER CONES. SPACING SHALL NOT EXCEED 100 FEET FOR TYPE II BARRICADES, VERTICAL PANELS OR DRUMS.

**NOTE 2**  
 A MINIMUM OF FIVE (5) CHANNELIZING DEVICES SHALL BE PLACED THROUGH THIS TAPER.

**NOTE 3**  
 DOWNSTREAM TAPERS SHALL CONTAIN A MINIMUM OF FOUR (4) CHANNELIZING DEVICES.

**NOTE 4**  
 MAXIMUM SPACING BETWEEN CHANNELIZING DEVICES (FEET) SHALL BE EQUAL TO THE POSTED SPEED LIMIT (M.P.H.) WITH THE FOLLOWING EXCEPTIONS. SPACING SHALL NOT EXCEED 25 FEET FOR CONES OR TUBE CHANNELIZERS. SPACING SHALL NOT EXCEED 50 FEET FOR TYPE II BARRICADES, VERTICAL PANELS OR DRUMS.

IN INSTANCES WHERE SIGHT DISTANCE MAY BE RESTRICTED DUE TO A CREST VERTICAL CURVE, HORIZONTAL CURVE OR OTHER FACTORS, THE CHANNELIZING DEVICES ARE TO BE EXTENDED TO A POINT WHERE THEY ARE VISIBLE TO APPROACHING TRAFFIC.

FOR ADDITIONAL INFORMATION ABOUT TAPER LENGTHS AND SPACING OF CHANNELIZING DEVICES, SEE STANDARD DRAWING TCS2-1-(LATEST REVISION).

- KEY:**
- ▭ SIGN
  - DRUM
  - ▨ WORK AREA
  - ▲▲▲ TYPE III BARRICADE
  - CHANNELIZER CONE

DRAWING NOT TO SCALE

**TRAFFIC CONTROL DETAIL**  
**PHASES 7 & 8**

Drawn	RGN	2/16
Design	RGN	2/16
Checked	JLS	2/16

TRAFFIC ENGINEERING  
 JAMI SHORT

STATE OF OKLAHOMA	DEPARTMENT OF TRANSPORTATION
DIVISION 1	STATE JOB NO. 27958(04)

SHEET NO. 85  
 MUSKOGEE COUNTY US-62